

relax and allow us
to take control

Seismic mass Floor plate

Floor plates

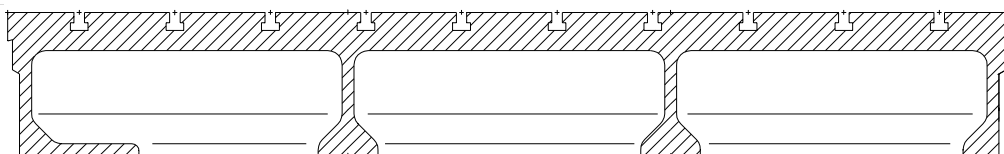
Floor plates are made from a special cast iron / steel alloy giving a Brinell hardness of 180-200. Exceptional stability is achieved by rib pattern and design accompanied with a controlled process cooling after casting.

The top surface is planed to DIN 867 flatness accuracy.

T-slots are machined according to DIN 650 H12. The size and the width of the slots is arranged according to the customer's needs.



ribbed floor plate (two-piece)



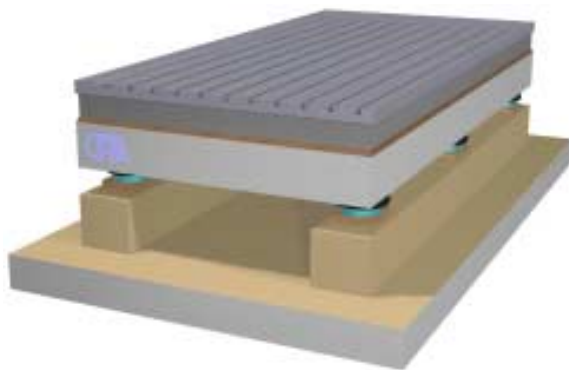
cross-section of a ribbed floor plate

relax and allow us
to take control

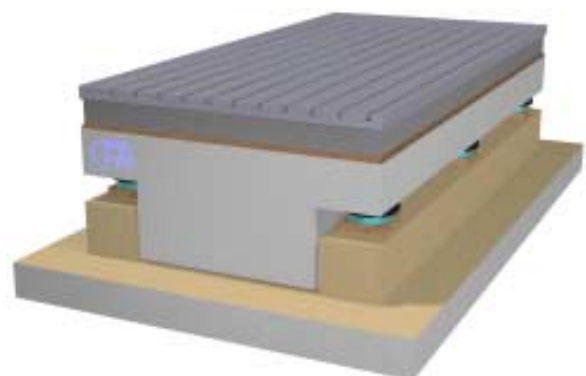
Seismic mass Foundation block

Foundation block

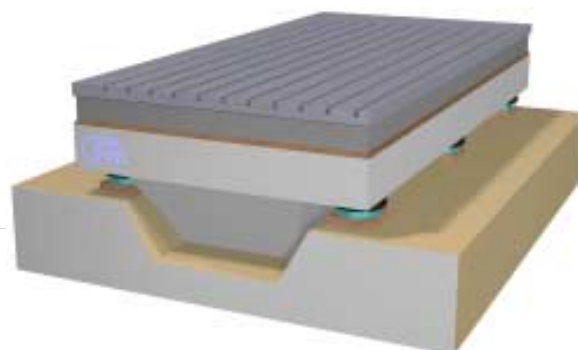
Usually the foundation block is a steel-concrete-construction individually designed for special customer's use. In most applications the concrete block is covered with a cast iron floor plate. Here it is possible to realize seismic masses up to 2000 tonnes.



seismic mass with
rectangular cross-section



seismic mass with T-shaped
cross-section



seismic mass with Conic-shaped
cross-section